

Lucy Pittaway



Who is she?

Lucy Pittaway is a local artist based in Yorkshire. She owns three galleries in the North East.

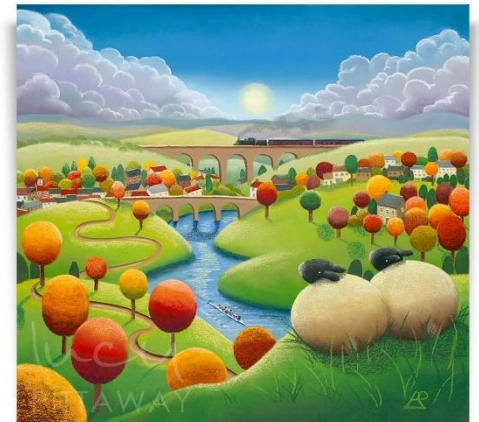
What does her art feature?

Her artwork often features sheep, highland cows and flowers. She also takes inspiration from the local area such as Whitby and Harrogate and local events, such as The Tour de Yorkshire. You will recognise lots of the places that she has painted!



What is her style?

Lucy Pittaway's style is very colourful and vibrant with clear outlines. As she mainly creates landscape artwork, blue and green are the main colours that she uses.



Assessment Questions

1. Where is Lucy Pittaway from?
2. What does her art usually have in it?
3. What colours does she use? Are they bright colours or dark colours?
4. How could you make art that is in the same style as Lucy's?
5. What do you think of Lucy Pittaway's art? Why?

